

LEGEND

DRAINAGE AREA		OUTFALL		TOTAL AREA (ha)
	ELLIS AVENUE	H1/W12		89.5
	COLBORNE LODGE DRIVE	W11		17.8
— DIA (mm)				
→	STORM SEWER			

BLOOR STREET

WEST STREET

WEST STREET

WEST STREET

WEST STREET

WEST STREET

WEST STREET

HUMBER RIVER

HUMBER RIVER

GRENADIER PARK

GRENADIER POND

H1

W12

W11

W10

HP5

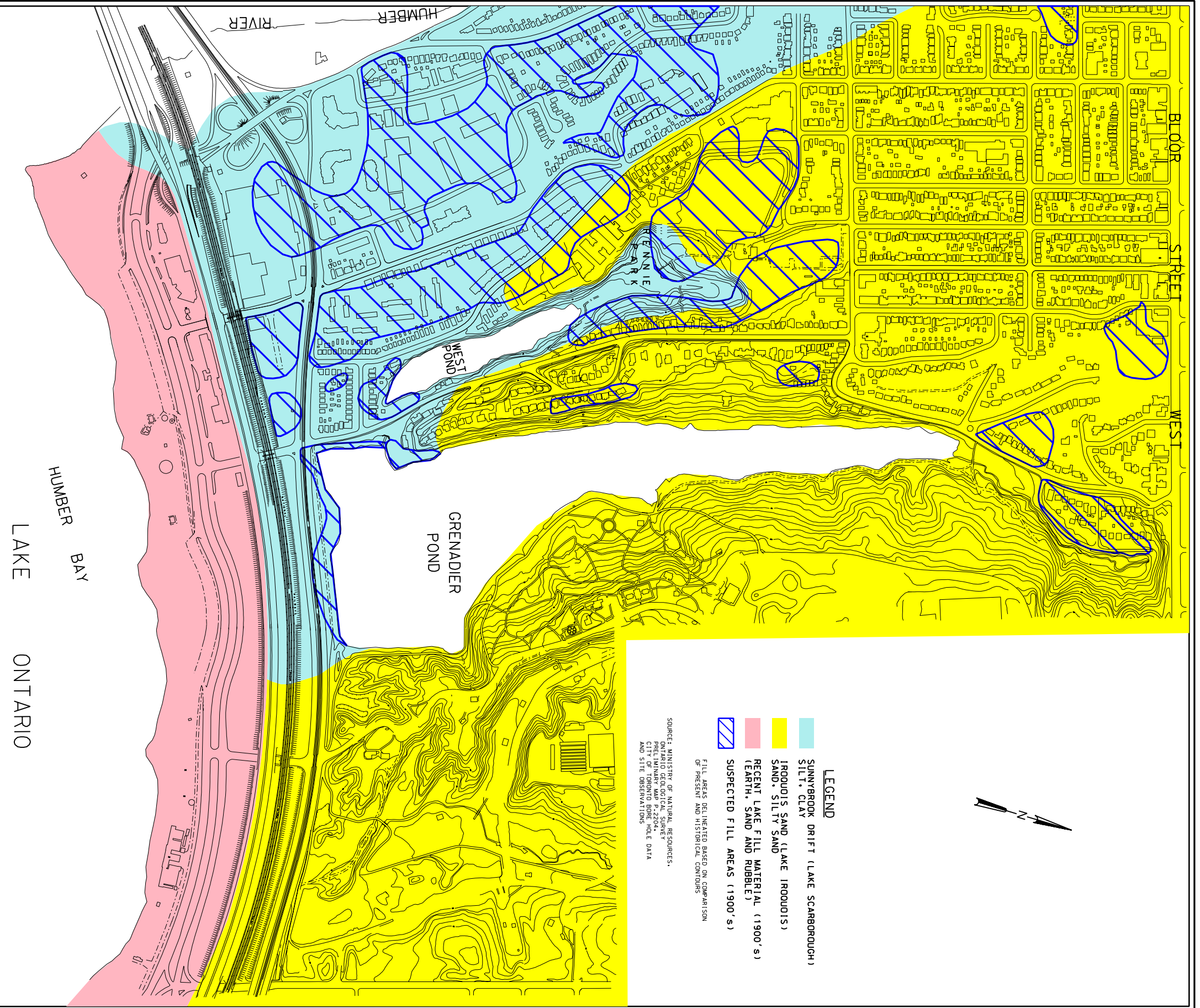
HP8

HP3

HP2

HUMBER BAY

LAKE HONTOARIO

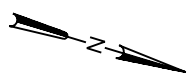


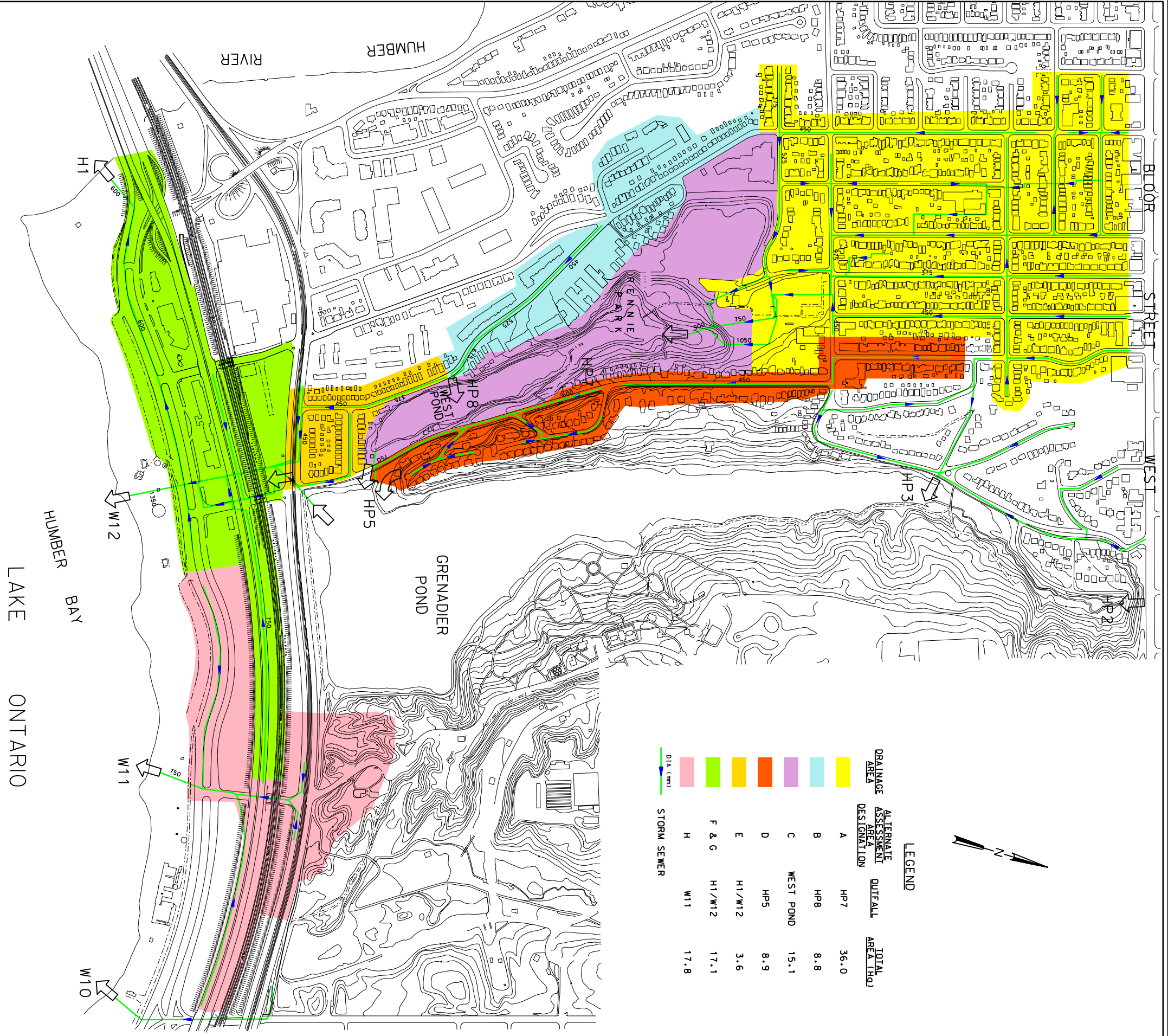
LEGEND

- SUNNYSBROOK DRIFT (LAKE SCARBOROUGH)
SILT, CLAY
- IRONOU'S SAND (LAKE IRONOUIS)
SAND, SILTY SAND
- RECENT LAKE FILL MATERIAL (1900'S)
(EARTH, SAND AND RUBBLE)
- SUSPECTED FILL AREAS (1900'S)

FILL AREAS DELINEATED BASED ON COMPARISON
OF PRESENT AND HISTORICAL CONTOURS

SOURCE: MINISTRY OF NATURAL RESOURCES,
PRELIMINARY MAP P-2204-1E1
CITY OF TORONTO BORE HOLE DATA
AND SITE OBSERVATIONS

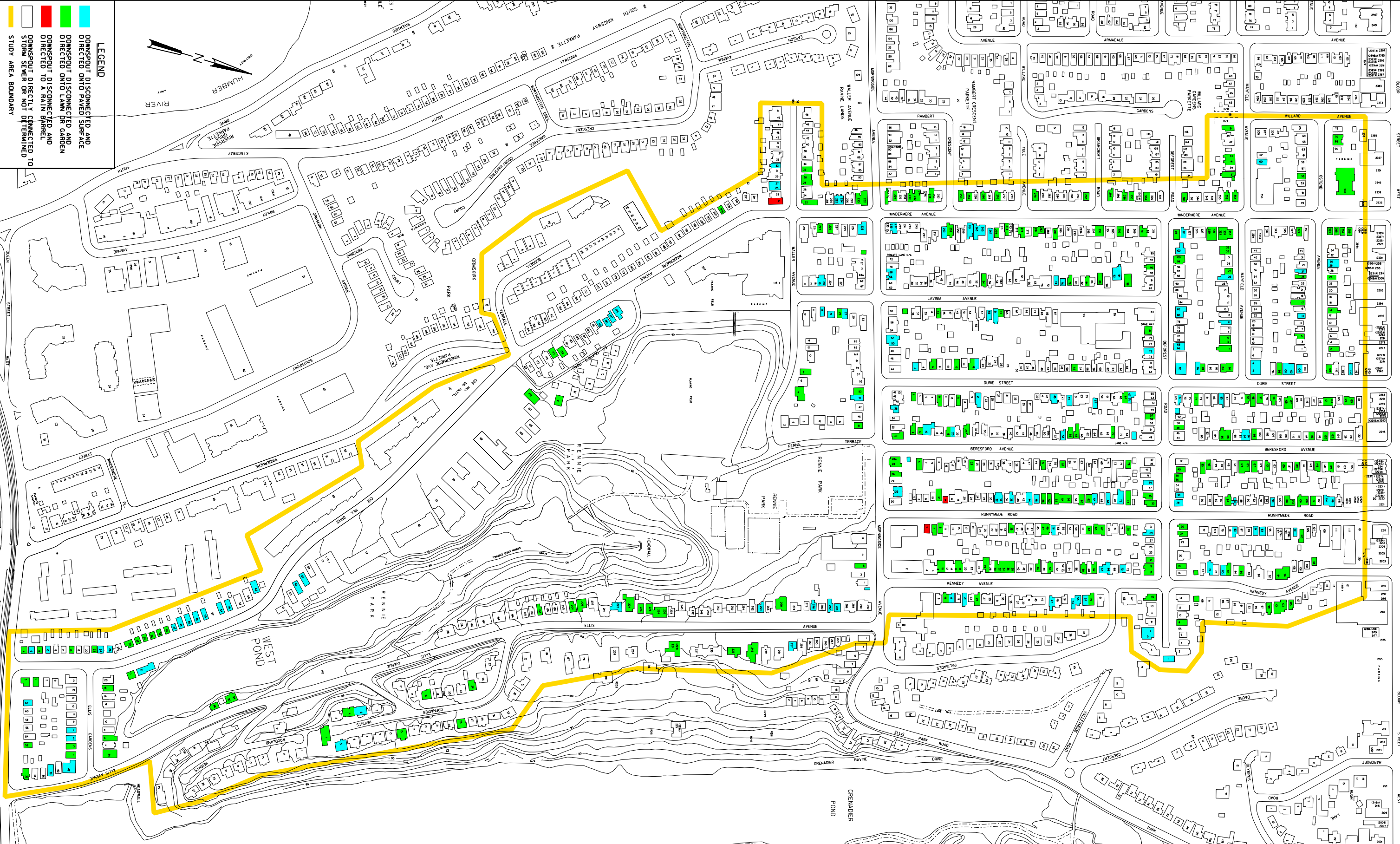




CH2MHILL TORONTO

ELLIS AVENUE & COLBORNE LODGE DRIVE STORMWATER MANAGEMENT SYSTEM DOWNSPOUT DISCONNECTION SURVEY - FEBRUARY, 2000

FIGURE 3-3



LEGEND

- DOWNSPOUT DISCONNECTED AND DIRECTED ONTO PAVED SURFACE
- DOWNSPOUT DISCONNECTED AND DIRECTED ONTO LAWN OR GARDEN
- DOWNSPOUT DISCONNECTED AND DIRECTED TO A RAIN BARREL
- DOWNSPOUT DIRECTLY CONNECTED TO STORM SEWER OR NOT DETERMINED
- STUDY AREA BOUNDARY

